

Jacket & Coat – Finish





Jacket & Coat – Finish

General Advantages of BRISAY

1 Patented heating system

Especially developed for the garment industry, our patented heating system saves energy costs up to 30 % and shortens the heating-up times of the ironing bucks.

2 Ironing bucks*

We provide a wide range of ironing bucks for your individual needs. The upper and lower bucks as well as the left and right ironing bucks are shaped perfectly through a special digital surface processing technique (CNC treatment).

3 Overlapping ironing

The special ironing buck design ensures all the surface area is covered by overlapping during the different pressing operations, this is especially important for finishing front and back parts, collar and shoulder parts (regardless of the size).

4 Isolated ironing bucks*

Our special isolation of the upper forms helps significantly reduce energy costs.

5 Covers for ironing bucks

The usage of high-quality materials provide a long working-life and optimal ironing results.

6 Cover exchange function*

The covers can be easily exchanged through a user-friendly exchange function incorporated into the programmer. To position the cover, the upper form is moved to a distance setting and afterwards into the closing position to hold the covering material in place while securing.

7 Spot light*

With the help of a spot light, the operator can easily position the interlinings for an optimal ironing process.

8 Vertical adjustment of the machine*

The height of the machine is ergonomically adjustable and therefore provides a more efficient work place.

9 Adjustable pedal*

The pedal is ergonomically adjustable and therefore provides a more efficient work place.

10 Construction units and components

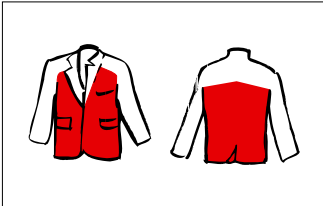
BRISAY uses only the highest-quality components, produced by internationally known manufacturers, to ensure the best reliability of the machines.

11 Power supply

All machines are ready for installation and connection to a central power supply (steam, exhaust and air). Steam traps are standard equipment.

Please check for these numbers to see if those advantages apply for the specific model you are interested in.

BRISAY Finish Pressing Machines



Operation:

Finish of left and right front and back panel incl. shaping effect



BRI-1400/101

Vertical jacket front and back finish pressing machine "Robot"

- Four-part front and back finish pressing machines: both front- and back parts are processed by one operator
- Vertically arranged buck shapes: jacket hangs on the buck as on a human body / alignment of seams, edges and stripes is easier / Jacket remains on hanger during pressing process / operator works in upright position and not in bent body / time to finish the lining is minimized due to the pressing in hanging position
- Vertical closing of head bucks: transfers even distribution of pressure onto the entire pressing surface and prevents displacement of the pressing good / Increases quality
- Head bucks with separate chambers for steam and suction: Individual processing of the upper and lower area of the front parts / flexible solution for different types of fabrics

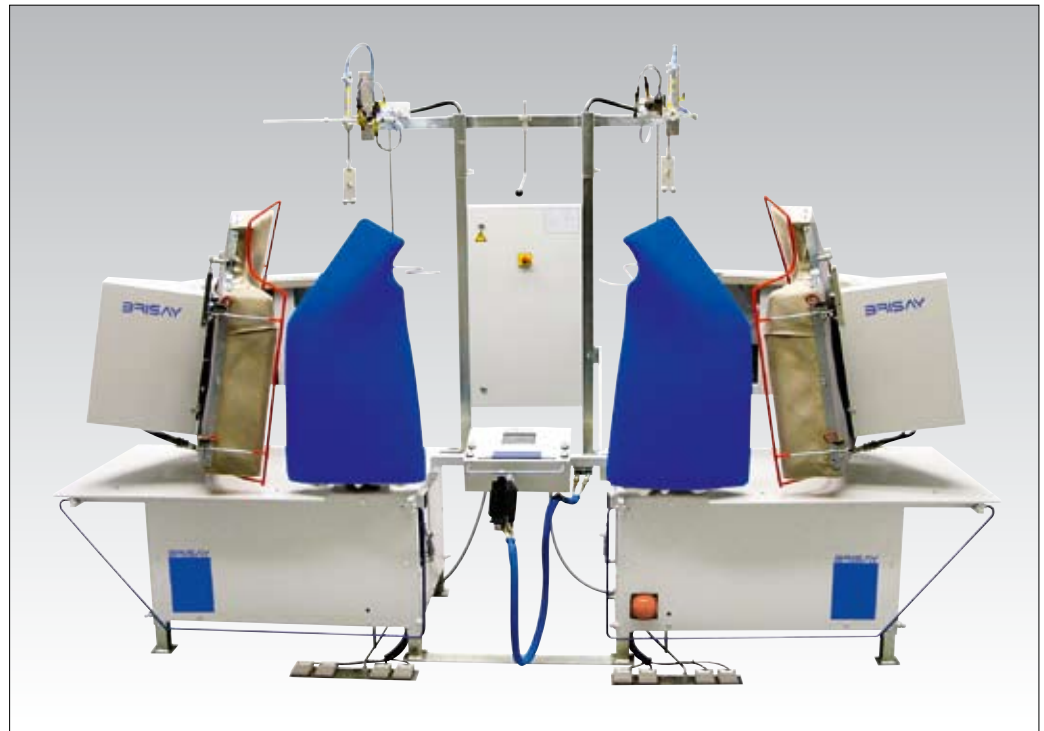
- Lower bucks with 2-step suction: facilitates the positioning
- Suspension device for pressing jackets on hanger: no loading and unloading from/to hanger (time saving)
- Digital programmer (DPS-Touch): Up-to-date and user-friendly touch-screen programmer automatically controls the machine via individual programs / Increases productivity
- Separate program selection switch: Allows quick change of programs when using DPS-touch programmer / Improves workstation layout.
- Automatic program stepping: automatic transfer of the program from the first machine side to the second machine side / Increases productivity
- Optional tandem operation: 2 different programs can be carried out at the same time / Increases productivity
- Digital distance control: Variable adjustment of the distance between the pressing shapes during the pressing process to avoid marks and shine on all types of fabric
- Automatic conveying system with loading and unloading station: automatic loading and unloading of the jackets from/to the pressing bucks and transport to the next work station / Both front- and back parts are processed by one operator / Increases productivity
- Movement procedure display and error indication: facilitates the maintenance
- Customized transport to and from loading and unloading*: Increases productivity

Further advantages
1 2 3 4 5 6 7 8 9 10



Operation:

Finish of left and right front panel incl. shaping effect



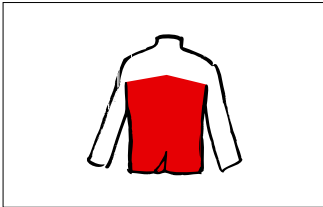
BRI-1200/101

Jacket front finish pressing machine (Bucks vertically arranged)

- Vertically arranged buck shapes: jacket hangs on the buck as on a human body / alignment of seams, edges and stripes is easier / jacket remains on hanger during pressing process / operator works in upright position and not in bent body / time to finish the lining is minimized due to the pressing in hanging position
- Vertical closing of head bucks: transfers even distribution of pressure onto the entire pressing surface and prevents displacement of the pressing good / Increases quality
- Head bucks with separate chambers for steam and suction: individual processing of the upper and lower area of the front parts / flexible solution for different types of fabric
- Lower bucks with 2-step suction: facilitates the positioning
- Additional blowing device on the armhole area: escaped steam is blown away avoiding steam marks
- Suspension device for pressing jackets on hanger: no loading and unloading from/to hanger (time saving)
- Suspension device (horizontally travelling)*: improved positioning of the pressing good / Improves work station layout
- Digital programmer (DPS-Touch): Up-to-date and user-friendly touchscreen programmer automatically controls the machine via individual programs / Increases productivity
- Separate program selection switch: Allows quick change of programs when using DPS-touch programmer / Improves work station layout
- Intermediate jacket hanging device: During cooling of the pressing good the program stepping device is activated / Increases quality / Increases productivity
- Automatic program stepping: automatic transfer of the program from the first machine side to the second machine side / Increases productivity
- Optional tandem operation: 2 different programs can be carried out at the same time / Increases productivity
- Digital distance control: Variable adjustment of the distance between the pressing shapes during the pressing process to avoid marks and shine on all types of fabric

Further advantages

1 2 3 4 5 6 7 8 9 10



Operation:
 Finish of left and right back panel incl. shaping effect



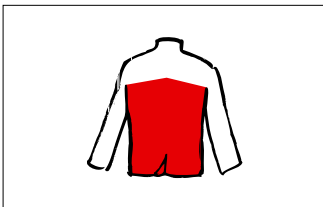
**BRI-1300/101
 Jacket back finish pressing machine (bucks vertically arranged)**

- Vertically arranged buck shapes: jacket hangs on the buck as on a human body / alignment of seams, edges and stripes is easier / jacket remains on hanger during pressing process / operator works in upright position and not in bent body / time to finish the lining is minimized due to the pressing in hanging position
- Vertical closing of head bucks: transfers even distribution of pressure onto the entire pressing surface and prevents displacement of the pressing good / Increases quality
- Head bucks with separate chambers for steam and suction: individual processing of the upper and lower area of the front parts / flexible solution for different types of fabric
- Lower bucks with 2-step suction: facilitates the positioning
- Additional blowing device on the armhole area: escaped steam is blown away avoiding steam marks
- Suspension device for pressing jackets on hanger: no loading and unloading from/to hanger (time saving)
- Digital programmer (DPS-Touch): Up-to-date and user-friendly touchscreen programmer automatically controls the machine via individual programs / Increases productivity
- Separate program selection switch: Allows quick change of programs when using DPS-touch programmer / Improves work station layout
- Intermediate jacket hanging device: During cooling of the pressing good the program stepping device is activated / Increases quality / Increases productivity
- Automatic program stepping: automatic transfer of the program from the first machine side to the second machine side / Increases productivity
- Optional tandem operation: 2 different programs can be carried out at the same time / Increases productivity
- Digital distance control: Variable adjustment of the distance between the pressing shapes during the pressing process to avoid marks and shine on all types of fabric

Further advantages
 1 2 3 4 5 6 7 8 9 10



Operation:
BRI-1005C/101: Finish of left and right front panel incl. shaping effect



Operation:
BRI-1105C/101: Finish of left and right back panel incl. shaping effect



BRI-1005C/101
Jacket front finish pressing machine (180 carousel)
BRI-1105C/101
Jacket back finish pressing machine (180 carousel)

- Bucks in "V-position": makes the positioning easier due to the special buck arrangement
- Vertical closing of head bucks: transfers even distribution of pressure onto the entire pressing surface and prevents displacement of the pressing good / Increases quality

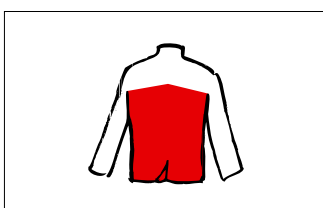
- Lower buck with 2-step suction: facilitates the positioning especially on sensitive fabrics
- Additional suction while buck rotating/buck stopping: Prevents displacement of the pressing good
- Shaped deposit fixture: Protects the side of the jacket already finished / Increases quality
- Digital programmer (DPS-Touch): Up-to-date and user-friendly touch-screen programmer automatically controls the machine via individual programs / Increases productivity
- Separate program selection switch: Allows quick change of programs when using DPS-touch programmer / Improves work station layout
- Digital distance control: Variable adjustment of the distance between the pressing shapes during the pressing process to avoid marks and shine on all types of fabric
- Steam lower buck*: for finishing of velvet fabrics
- Jacket deposit*: finished good is protected after pressing / Increases quality

Further advantages

1 2 3 4 5 6 7 8 9 10



Operation:
BRI-1005M/101: Finish of left and right front panel incl. shaping effect



Operation:
BRI-1105M/101: Finish of left and right back panel incl. shaping effect



BRI-1005M/101
Overcoat front finish pressing machine (two-part machine)
BRI-1105M/101
Overcoat back finish pressing machine (two-part machine)

- Linear travelling frame: Eliminates obstruction in the loading area during positioning / free visibility to

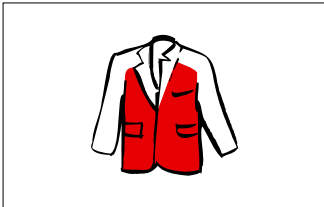
the pressing good / no heat radiation to the operator

- Vertical closing of head bucks: transfers even distribution of pressure onto the entire pressing surface and prevents displacement of the pressing good / Increases quality

- Digital programmer (DPS-Touch): Up-to-date and user-friendly touch-screen programmer automatically controls the machine via individual programs / Increases productivity
- Separate program selection switch: Allows quick change of programs when using DPS-touch programmer / Improves work station layout
- Digital distance control: Variable adjustment of the distance between the pressing shapes during the pressing process to avoid marks and shine on all types of fabric
- Steam lower buck*: for finishing of velvet fabrics

Further advantages

1 2 3 4 5 6 7 8 9 10



Operation:

BRI-1005E/101: Finish of left and right front panel incl. shaping effect



Operation:

BRI-1105E/101: Finish of left and right back panel incl. shaping effect



BRI-1005E/101

Jacket front finish pressing machine (twin buck set)

BRI-1105E/101

Jacket back finish pressing machine (twin buck set)

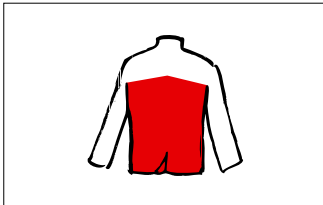
- Twin buck set on linear travelling frame: Eliminates obstruction in the loading area during positioning / free visibility to the pressing good / no heat radiation to the operator
- Vertical closing of head bucks: transfers even distribution of pressure onto the entire pressing surface and prevents displacement of the pressing good / Increases quality
- Digital programmer (DPS-Touch): Up-to-date and user-friendly touch-screen programmer automatically controls the machine via individual programs / Increases productivity
- Separate program selection switch: Allows quick change of programs when using DPS-touch programmer / Improves work station layout
- Digital distance control: Variable adjustment of the distance between the pressing shapes during the pressing process to avoid marks and shine on all types of fabric
- Steam lower buck*: for finishing of velvet fabrics
- Unloading device for left or right jacket front*: automatic unloading of the pressing good / Increases productivity
- Jacket deposit*: finished good is protected after pressing / Increases quality

Further advantages

1 2 3 4 5 6 7 8 9 10



Operation:
BRI-1015E/101: Finish of left and right front panel incl. shaping effect



Operation:
BRI-1115E/101: Finish of left and right back panel incl. shaping effect



BRI-1015E/101
Jacket front finish pressing machine (twin buck set)

BRI-1115E/101

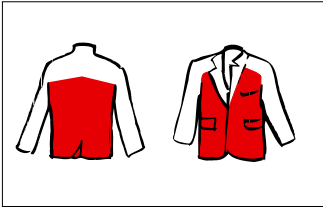
Jacket back finish pressing machine (twin buck set)

- Twin buck set, vertical head closing (scissor vertical frame): Eliminates obstruction in the loading area during positioning / free visibility to the pressing good / no heat radiation to the operator
- Digital programmer (DPS-Touch): Up-to-date and user-friendly touchscreen programmer automatically controls the machine via individual programs / Increases productivity
- Separate program selection switch: Allows quick change of programs when using DPS-touch programmer / Improves work station layout
- Steam lower buck*: for finishing of velvet fabrics
- Electro-mechanical distance control: Variable adjustment of the distance between the pressing shapes during the pressing process to avoid marks and shine on all types of fabric

- Unloading device for left or right jacket front*: automatic unloading of the pressing good / Increases productivity
- Jacket deposit*: finished good is protected after pressing / Increases quality

Further advantages

1 2 3 4 5 6 7 8 9 10



Operation:
Finish of various parts

BRI-2000/101
Utility pressing machine (program controlled)

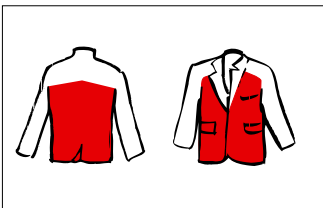
- Linear travelling frame: Eliminates obstruction in the loading area during positioning / free visibility to the pressing good / no heat radiation to the operator
- Vertical closing of head bucks: transfers even distribution of pressure onto the entire pressing surface and prevents displacement of the pressing good / Increases quality



- Digital programmer (DPS-Touch): Up-to-date and user-friendly touch-screen programmer automatically controls the machine via individual programs / Increases productivity
- Separate program selection switch: Allows quick change of programs when using DPS-touch programmer / Improves work station layout
- Manual operation via pedal: additional operation without the use of programmer / added flexibility
- Digital distance control: Variable adjustment of the distance between the pressing shapes during the pressing process to avoid marks and shine on all types of fabric
- Steam edge suction: prevents damage to previously finished pressing areas during the pressing process / pleasant working environment
- Blowing via knee rocker switch*: Easy to use knee operated device for blowing in addition to the pedal
- Suction via knee rocker switch: Easy to use knee operated device for suction in addition to the pedal
- Sequence control for programs*: linkage of different programs for different pressing cycles within one program

Further advantages

1 2 4 5 6 8 9 10



Operation:
Finish of various parts



BRI-2000E/101
Utility pressing machine (manual operation)

- Manual operation via pedal
- Digital programmer (DPS-Touch): Up-to-date and user-friendly touch-screen programmer automatically controls the machine via individual programs / Increases productivity
- Separate program selection switch: Allows quick change of programs when using DPS-touch programmer / Improves workstation layout.
- Sequential Timer control for steam/

suction/blowing*: semi-automatic operation controlled via adjustable timer controls

- Electro-mechanical distance control: Variable adjustment of the distance between the pressing shapes during the pressing process to avoid marks and shine on all types of fabric
- Steam edge suction: prevents damage to previously finished pressing areas during the pressing process / pleasant working environment

Further advantages

1 2 4 5 8 9 10

BRI-2001E/101
Utility pressing machine (timer controlled)

- Manual operation via pedal
- Electro-mechanical distance control: Variable adjustment of the distance between the pressing shapes during the pressing process to avoid marks and shine on all types of fabric
- Steam lower buck via pedal*: for pre-steaming or finishing of velvet fabrics
- Blowing lower buck*: for finishing of velvet fabrics

- Integrated sequential timer control: for steam/suction/blowing, dwell time between steam and suction and head closing / semi-automatic operation controlled via adjustable timer controls

Further advantages

1 2 5 8 9 10



Operation:
Finish of collar and lapel incl. a crease in collar and lapel



BRI-710/101

Collar finish pressing machine

- 3 individually closing heads **2**,
- 1 basic buck: 3 separate head bucks for overlapping pressing and preventing of displacement of the pressing good
- Adjustable lapel head position: flexible solution on different lapel styles
- 2 separate chambers in lapel head buck: for the processing of short and long lapels
- Manual pre-steaming with collar head buck: Allows corrections from previous pressing operations
- Lapel holding arm **1**: facilitates the positioning
- Digital programmer (DPS-Touch): Up-to-date and user-friendly touch-screen programmer automatically controls the machine via individual programs / Increases productivity
- Separate program selection switch: Allows quick change of programs when using DPS-touch programmer / Improves work station layout
- 2 mirrors for positioning: facilitates the positioning of the back part
- Digital distance control*: Variable adjustment of the distance between the pressing shapes during the pressing process to avoid marks and shine on all types of fabric
- Collar head suction*: escaped steam is sucked off (after head distance and blowing lower buck) into the head buck in order to avoid steam touching the garment outside of the pressing area / Increases quality when pressing high sensitive fabrics / Avoiding marks.
- Airbags***1**: for optimal positioning of the garment especially for large sizes / flexible solution on different collar sizes
- Steam for bust*: Optional pre-steaming and/or the finish of velvet fabrics

BRI-710E/201
Collar finish pressing machine (program- controlled)

- 1 head and 1 lower buck: optimal design for collar and lapel
- Digital programmer (DPS-Touch): Up-to-date and user-friendly touch-screen programmer automatically controls the machine via individual programs / Increases productivity
- Separate program selection switch: Allows quick change of programs when using DPS-touch programmer – Improves work station layout.
- Electro-mechanical distance control (variable adjustment of the distance values between the pressing shape during the pressing process)*: avoids marks and shine on all types of fabric
- Collar head suction*: escaped steam is sucked off into the head buck in order to avoid steam touching the garment outside of the pressing area – Increases quality when pressing highly sensitive fabrics



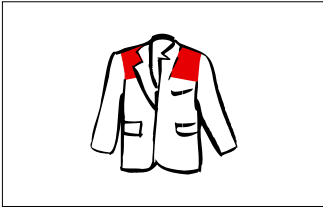
- Airbags*: for optimal positioning of the garment especially for large sizes – flexible solution on different collar sizes

Further advantages
1 2 5 8 9 10

This machine also available with timer sequential control (BRI-710 E/101)

Further advantages

1 2 3 4 5 6 8 9 10



Operation:
Finish of sleeve head seams

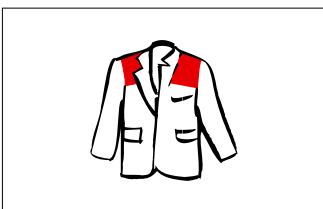
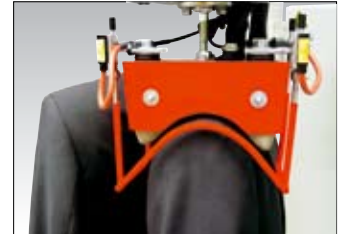


BRI-1650/101
Sleeve head seam finish-pressing machine (program controlled)

- 2 head bucks and 2 lower bucks: optimal buck design according the shoulder style / perfect pressing of the sleeve head seam
- Optional closing head bucks separate or together: according to application
- Digital programmer (DPS-Touch): Up-to-date and user-friendly touch-screen programmer automatically controls the machine via individual programs / Increases productivity
- Separate program selection switch: Allows quick change of programs when using DPS-touch programmer / Improves work station layout
- Manual operation via pedal: additional operation without the use of programmer / added flexibility

Further advantages

1 2 4 5 6 7 8 9 10



Operation:
Finish of complete shoulder area incl. shaping effect



BRI-1920E/201
Shoulder finish pressing machine (program controlled)

- 2 Head bucks and 2 lower bucks: optimal fit according to different shoulder styles for the pressing of left and right shoulders
- Optional closing head bucks separate or together: according to application
- Digital programmer (DPS-Touch): Up-to-date and user-friendly touch-screen programmer automatically controls the machine via individual programs / Increases productivity
- Separate program selection switch: Allows quick change of programs when using DPS-touch programmer / Improves work station layout
- Manual operation via pedal: additional operation without the use of programmer / added flexibility
- Electro-mechanical distance control: Variable adjustment of the distance between the pressing shapes during the pressing process to avoid marks and shine on all types of fabric

- Collar head suction*: escaped steam is sucked off into the head buck in order to avoid steam touching the garment outside of the pressing area / Increases quality when pressing highly sensitive fabrics

Further advantages

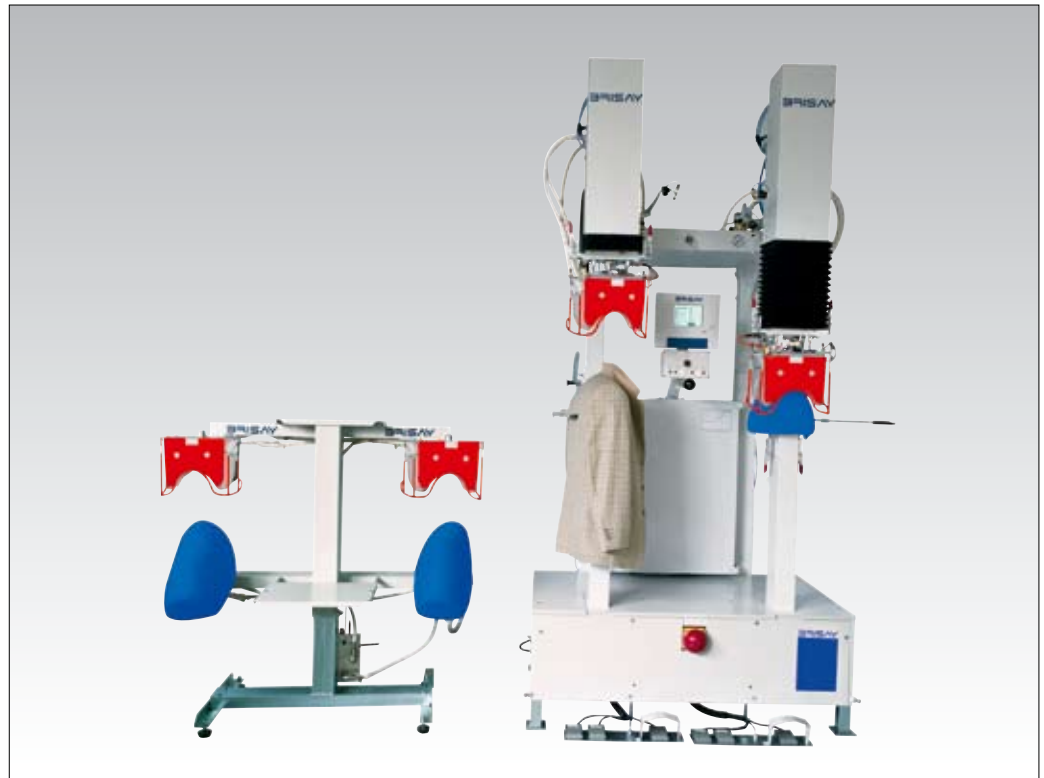
1 2 5 7 8 9 10

This machine also available with sequential timer control (BRI-1920 E/101)



Operation:

Finish of complete shoulder area incl. shaping effect



BRI-1920/201
Shoulder finish pressing machine
with rapid buck exchange system
(program controlled)

- 2 Head bucks and 2 lower bucks: optimal fit according to different shoulder styles for the pressing of left and right shoulders
- Special buck design (accommodates all independent sizes): for overlapping pressing
- Rapid exchange system for bucks: for a flexible and quick solution to changes in fashion trends (men and ladies'wear) / Shapes can be easily changed within a very few minutes / Increases productivity
- 1 additional set of bucks*: additional buck shape for a flexible solution for different shoulder styles - Added flexibility
- Buck heating unit*: additional buck set is pre-heated and can be used immediately after changing / Increases productivity

- 2 back holding arms: pressing good is held during the pressing operation
- Digital programmer (DPS-Touch): Up-to-date and user-friendly touch-screen programmer automatically controls the machine via individual programs / Increases productivity
- Separate program selection switch: Allows quick change of programs when using DPS-touch programmer - Improves work station layout
- Manual operation via pedal: additional operation without the use of programmer / added flexibility
- Intermediate jacket hanging device: During cooling of the pressing good the program stepping device is activated / Increases quality / Increases productivity
- Automatic program stepping: automatic transfer of the program from the first machine side to the second machine side / Increases productivity
- Optional tandem operation: 2 different programs can be carried out at the same time | Increases productivity

- Digital distance control: Variable adjustment of the distance between the pressing shapes during the pressing process to avoid marks and shine on all types of fabric
- Blowing device in collar area*: escaped steam is blown away avoiding steam marks, touch-up work is reduced

Further advantages

1 2 3 4 5 6 7 8 9 10

This machine also available without rapid exchange buck system (BRI-1920/101)



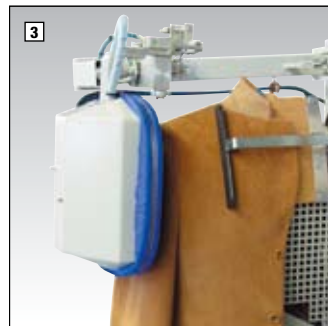
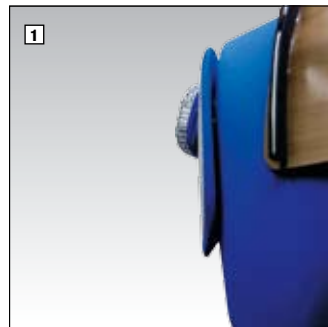
Operation:

Complete sleeve finish and a perfect and very high creasing of the armhole area



BRI-810/101
Armhole creasing and sleeve finishing machine with sleeve stretching device

- Exchangeable crease plate system **1** incl. 3 pairs of crease plates: very high creasing of the armhole area and a flexible solution for different armhole sizes / time for touch-up is minimized
- Crease plates with two-stage closing option: flexible solution on different kind of fabrics; very sensitive fabrics can be finished without pressure
- Sleeve head finisher **3** with air cushion (roll-up movement): for the finish of the "sleeve roll" in front and back part / for push-up sleeve models / shaping of complete sleeve head contour / very sensitive operation by a special Airbag-System (pressure is individually adjustable) / garment is held securely in place / Seven different movements are freely programmable
- Side part stretching device **5** (see page 15): prevents damage of the side seams during machine processing



- Sleeve stretching device **2** (height and angle of inclination can be individually adjusted): holding device and additional tensioning of the sleeve during finishing process
- Blowing in lower arm-hole area*: escaped steam from sleeve finish is blown away / jacket side and back areas are not damaged by steam (no further touch-up required)
- Crease plate heating system **4** (for 2 or 4 set of plates)*: crease plates are pre-heated / Allows immediate use of the crease plate after changing / Increases productivity
- Proportional blowing system*: Prevents unwelcome stretching of the sleeve with highly sensitive fabrics / sleeve contour and sleeve design remains in shape / Increases quality

Further advantages
1 2 5 8 9 10

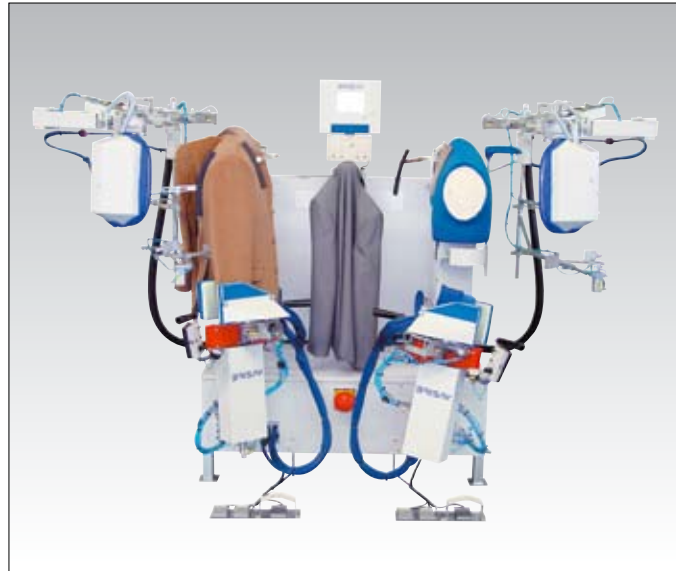
- Front and back part holders: facilitates the positioning
- Body buck with separate chambers (steam, suction and blowing): flexible solution for different kind of fabrics
- Digital programmer (DPS-Touch): Up-to-date and user-friendly touch-screen programmer automatically

- controls the machine via individual programs / Increases productivity
- Separate program selection switch: Allows quick change of programs when using DPS-touch programmer / Improves work station layout
- Optional tandem operation: 2 different programs can be carried out at the same time / Increases productivity



Operation:

Complete sleeve finish, perfect and a very high creasing of the armhole area and complete sleeve cuff and sleeve vent



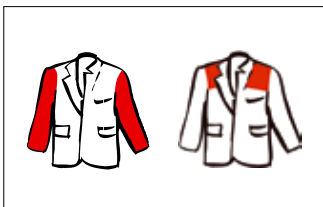
BRI-810/201

Armhole creasing and sleeve finishing machine with cuff finisher

- Sleeve cuff finisher: pressing of complete sleeve cuff, sleeve vent and sleeve vent crease
- Outer bucks with steam/suction and inner buck with sleeve-vent stretching device: perfect finish of sleeve cuff
- Height and angle of inclination can be individually adjusted / tensioning of the sleeve during finish process: flexible solution for different sizes and styles
- Adjustable distance and pressure level: flexible solution to different types of fabrics

Further advantages

1 2 5 7 8 9 10

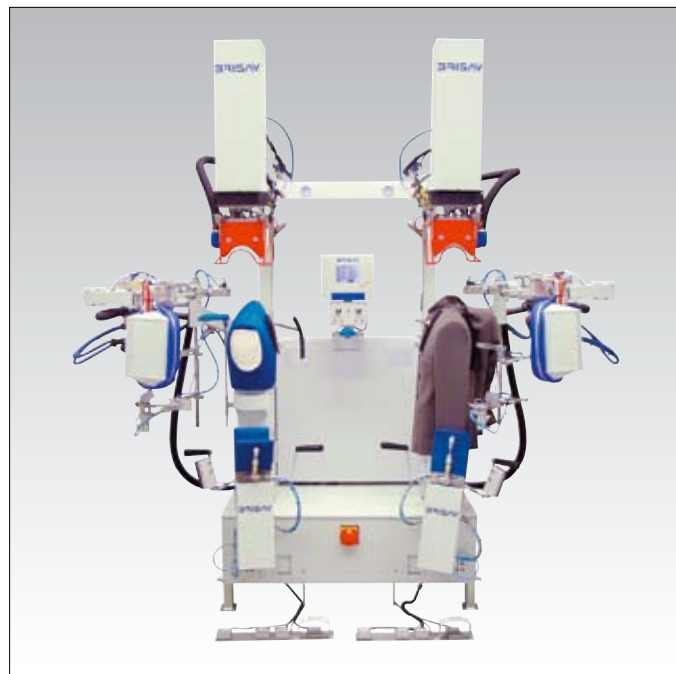


Operation:

BRI-810/111: Complete sleeve finish, a perfect and very high creasing of the armhole area and shoulder finish

Operation:

BRI-810/211: Complete sleeve finish, a perfect and a very high creasing of the armhole area, complete sleeve cuff and sleeve vent and shoulder finish



BRI-810/211

Armhole creasing and sleeve finishing machine with cuff finisher and shoulder pressing device

- Sleeve cuff finisher: pressing of complete sleeve cuff, sleeve vent and sleeve vent crease
- Outer bucks with steam/suction and inner buck with sleeve-vent stretching device: perfect finish of sleeve cuff
- Height and angle of inclination can be individually adjusted / re-stretching of the sleeve during finish process: flexible solution for different sizes and styles
- Adjustable distance and pressure level: flexible solution for different types of fabric
- Shoulder pressing device: shoulder pressing via programmer or alternatively via manual operation

Further advantages

1 2 5 6 7 8 9 10



BRI-810/111

Armhole creasing and sleeve finishing machine with sleeve stretching and shoulder pressing device

- Sleeve stretching device (height and angle of inclination can be individually adjusted): holding device and

additional tensioning of the sleeve during finishing process

- Shoulder pressing device: shoulder pressing via programmer or alternatively via manual operation

Further advantages

1 2 5 6 7 8 9 10



Operation:

Finish of upper sleeve part and creasing of armhole area

BRI-2065/101

Manual armhole creasing machine (manual operation)

- Manual operation via pedal
- Utility shape for a manual armhole creasing and sleeve finish: *optimal buck design for perfect pressing results*
- Steam edge suction: *prevents damage to previously finished pressing areas during the pressing process / pleasant working environment*

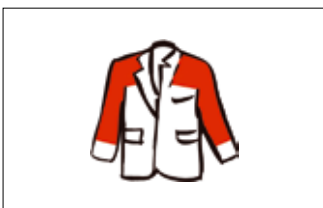


- Electro-mechanical distance control: *Variable adjustment of the distance between the pressing shapes during the pressing process to avoid marks and shine on all types of fabric*
- Additional steam head buck via pedal: *for a manual finish of the upper sleeve area*

- Suction or blowing via selection switch*: *optional suction or blowing is activated automatically with lifting of the steam iron*
- Sequential Timer control: *for steam/suction/blowing and closing head buck* / semi-automatic operation controlled via adjustable timer controls*
- Digital programmer (DPS-Touch): *Up-to-date and user-friendly touch-screen programmer automatically controls the machine via individual programs / Increases productivity*
- Separate program selection switch: *Allows quick change of programs when using DPS-touch programmer / Improves work station layout*
- Suction via knee rocker switch*: *Easy to use knee operated device for suction in addition to the pedal*

Further advantages

1 2 4 5 6 8 9 10



Operation:

Creasing of armhole area



BRI-2065/201

Manual armhole creasing machine (manual operation)

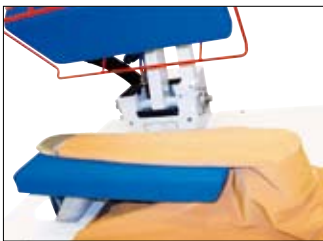
- Special buck for a manual armhole creasing: *optimal buck design for perfect pressing results*
- Manual operation via pedal
- Electro-mechanical distance control: *Variable adjustment of the distance between the pressing shapes during the pressing process to avoid marks and shine on all types of fabric*
- Sequential Timer control for steam/suction and head buck closing*: *semi-automatic operation controlled via adjustable electronic timer controls*

Further advantages

1 2 4 5 6 8 9 10



Operation:
Complete sleeve finish



BRI-880/101
Sleeve finish pressing machine
(program controlled)

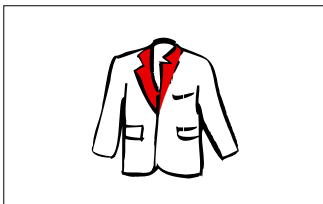
- Special buck design: a cushion that precisely fits the shape must be inserted into the sleeve before pressing
- Deposit plate: facilitates the positioning
- Digital programmer (DPS-Touch): Up-to-date and user-friendly touch-screen programmer automatically controls the machine via individual programs / Increases productivity
- Separate program selection switch: Allows quick change of programs when using DPS-touch programmer / Improves workstation layout.
- Electro-mechanical distance control (variable adjustment of the

distance values between the pressing shapes during the pressing process) *: avoids marks and shine on all types of fabric

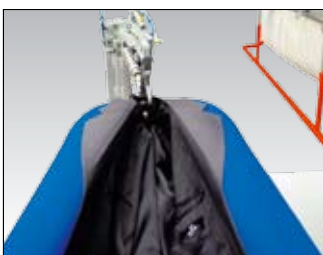
- Steam edge suction: prevents damage to previously finished pressing areas during the pressing process / pleasant working environment

Further advantages

1 2 4 5 6 8 9 10



Operation:
Finish of lapel incl. Shaping effect



BRI-905/101
Lapel finish pressing machine
(program controlled)

- Linear travelling frame: Eliminates obstruction in the loading area during positioning / free visibility to the pressing good / no heat radiation to the operator

- Vertical closing of head bucks: transfers even distribution of pressure onto the entire pressing surface and prevents displacement of the pressing good / Increases quality
- Suction in lower bucks individually activated: facilitates the positioning

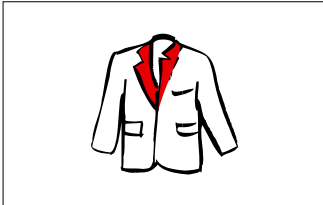
- Suction head buck incl. steam edge suction and central chamber suction: escaped steam is sucked off into the head buck in order to avoid steam touching the garment in- and outside of the pressing area / Increases quality when pressing highly sensitive fabrics / the previ-

ously finished lining is not damaged by steam

- Lateral suction*: additional suction for holding the jacket facing during the entire operation / Increases quality
- Digital programmer (DPS-Touch): Up-to-date and user-friendly touch-screen programmer automatically controls the machine via individual programs / Increases productivity
- Separate program selection switch: Allows quick change of programs when using DPS-touch programmer / Improves work station layout
- Steam edge suction: prevents damage to previously finished pressing areas during the pressing process / pleasant working environment
- Digital distance control: Variable adjustment of the distance between the pressing shapes during the pressing process to avoid marks and shine on all types of fabric
- Unloading device*: automatic unloading of the pressing good / Increases productivity

Further advantages

1 2 4 5 6 7 8 9 10



Operation:

Finish of lapel incl. shaping effect

BRI-905C/101

Lapel finish pressing machine (180° carrousel)

- Vertical closing of head bucks: transfers even distribution of pressure onto the entire pressing surface and prevents displacement of the pressing good / Increases quality
- Suction in lower bucks individually activated: facilitates the positioning
- Suction head buck incl. steam edge suction and central chamber suc-



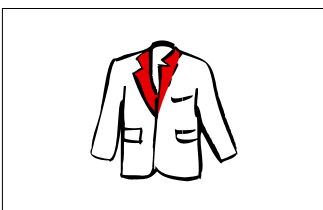
tion: escaped steam is sucked off into the head buck in order to avoid steam touching the garment in- and outside of the pressing area / Increases quality when pressing highly sensitive fabrics / the previously finished lining is not damaged by steam

- Additional suction while buck rotating/buck stopping: Prevents displacement of the pressing good
- Lateral suction*: additional suction for holding the jacket facing during the entire operation / Increases quality

- Digital programmer (DPS-Touch): Up-to-date and user-friendly touchscreen programmer automatically controls the machine via individual programs / Increases productivity
- Separate program selection switch: Allows quick change of programs when using DPS-touch programmer / Improves work station layout
- Digital distance control: Variable adjustment of the distance between the pressing shapes during the pressing process to avoid marks and shine on all types of fabric
- Steam edge suction: prevents damage to previously finished pressing areas during the pressing process / pleasant working environment

Further advantages

1 2 4 5 6 7 8 9 10



Operation:

Finish of lapel incl. shaping effect

BRI-905E/201

Lapel finish pressing machine (program controlled)

- Vertical closing of head bucks (vertical scissor frame): transfers even distribution of pressure onto the entire pressing surface and prevents displacement of the pressing good / Increases quality



- Suction in lower bucks individually activated: facilitates the positioning
- Digital programmer (DPS-Touch): Up-to-date and user-friendly touchscreen programmer automatically controls the machine via individual programs / Increases productivity
- Separate program selection switch: Allows quick change of programs when using DPS-touch programmer / Improves work station layout
- Suction head buck incl. steam edge suction and central chamber suction*: escaped steam is sucked off into the head buck in order to avoid steam touching the garment in- and outside of the pressing area / Increases quality when pressing highly sensitive fabrics / the previously finished lining is not damaged by steam

- Electro-mechanical distance control (variable adjustment of the distance values between the pressing shapes during the pressing process)*: avoids marks and shine on all types of fabric
- Lateral suction*: additional suction for holding the jacket facing during the entire operation / Increases quality
- Steam edge suction: prevents damage to previously finished pressing areas during the pressing process / pleasant working environment

Further advantages

1 2 5 7 8 9 10

This machine is also available with timer sequential control (BRI-905 E/101)



Operation:
Finish of lapel and collar incl. shaping effectg



BRI-950/101
Collar and lapel pressing machine
(program controlled)

- Special buck design: perfect form pressing for ladies' jacket and overcoats

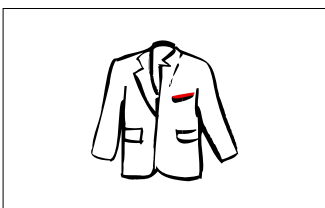


- Linear travelling frame: Eliminates obstruction in the loading area during positioning / free visibility to the pressing good / no heat radiation to the operator
- Vertical closing of head bucks: transfers even distribution of pressure onto the entire pressing surface and prevents displacement of the pressing good / Increases quality
- Digital programmer (DPS-Touch): Up-to-date and user-friendly touch-screen programmer automatically controls the machine via individual programs / Increases productivity

- Separate program selection switch: Allows quick change of programs when using DPS-touch programmer / Improves work station layout
- Suction in lower bucks individually activated: facilitates the positioning
- Steam edge suction prevents damage to previously finished pressing areas during the pressing process / pleasant working environment
- Collar head suction including steam edge suction: escaped steam is sucked off into the head buck in order to avoid steam touching the garment outside of the pressing area / Increases quality when pressing highly sensitive fabrics
- Digital distance control: Variable adjustment of the distance between the pressing shapes during the pressing process to avoid marks and shine on all types of fabric
- Unloading device for left or right side of the machine*: automatic unloading of the pressing good / Increases productivity

Further advantages

1 2 4 5 6 8 9 10



Operation: diverse operations



BRI-2068/101
Mini-utility pressing machine
(manual operation)

- Manual operation via pedal
- Utility buck shape: to carry out different working operations
- Steam edge suction: prevents damage to previously finished pressing areas during the pressing process / pleasant working environment
- Additional steam head buck via pedal: for a manual finish of the upper sleeve area
- Suction or blowing via selection switch*: optional suction or blowing is activated automatically with lifting of the steam iron
- Digital programmer (DPS-Touch): Up-to-date and user-friendly touch-screen programmer automatically controls the machine via individual programs / Increases productivity

- Separate program selection switch: Allows quick change of programs when using DPS-touch programmer / Improves work station layout
- Sequential Timer control for steam/suction/blowing and head buck closing*: semi-automatic operation controlled via adjustable electronic timer controls
- Blowing via knee rocker switch*: Easy to use knee operated device for blowing in addition to the pedal
- Suction via knee rocker switch*: Easy to use knee operated device for suction in addition to the pedal

Further advantages

1 2 4 5 6 8 9 10



Operation:
diverse operations



BRI-2068E/101
Mini-utility pressing machine
(electro-pneumatic controlled)

- Manual operation via pedal
- Utility buck shape: to carry out different working operations
- Electro-mechanical distance control: Variable adjustment of the distance between the pressing shapes during the pressing process to avoid marks and shine on all types of fabric
- Sequential Timer control for steam/suction/blowing and head buck closing*: semi-automatic operation controlled via adjustable electronic timer controls
- Steam lower buck via pedal*: for pre-steaming or finishing of velvet fabrics
- Blowing lower buck*: for finishing of velvet fabrics
- Table extension*: additional deposit/ Improves work station layout

Further advantages

1 2 5 8 9 10



Operation:
ironing of the lining

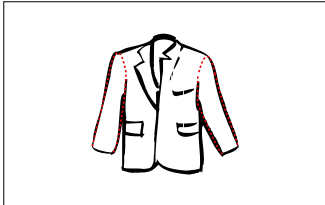


BRI-50
Spraying unit

- Spraying pistol with fine spray mechanism: avoids stains on the pressing good
- Water tank
- Pressure reducer with gauge
- Connections for water and air
- Support with installation kit*

Further advantages

8 10 11



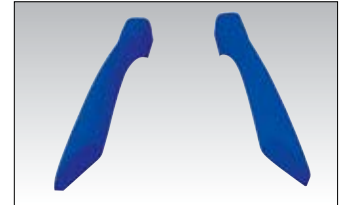
Operation:
Finish of sleeve seams also with buttons

BRI-860/101
Sleeve seam finish pressing machine, elbow-seams men's jacket (bucks in V-position)

- Linear travelling frame: Eliminates obstruction in the loading area during positioning / free visibility to the pressing good / no heat radiation to the operator
- Vertical closing of head bucks: transfers even distribution of pressure onto the entire pressing surface and prevents displacement of the pressing good / Increases quality

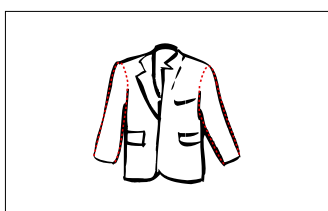


- Pressing of jackets on hanger: jacket remains on hanger during the pressing operation / Increases productivity
- Digital programmer (DPS-Touch): Up-to-date and user-friendly touchscreen programmer automatically controls the machine via individual programs / Increases productivity
- Separate program selection switch: Allows quick change of programs when using DPS-touch programmer / Improves workstation layout.



- Digital distance control: Variable adjustment of the distance between the pressing shapes during the pressing process to avoid marks and shine on all types of fabric.
- Steam edge suction: prevents damage to previously finished pressing areas during the pressing process / pleasant working environment
- Special buck design: Allows pressing with buttons already sewn on
- Suction and fine suction in lower bucks: facilitates the positioning

Further advantages
1 2 4 5 6 7 8 9 10



Operation:
Finish of sleeve seams

BRI-860/201
Sleeve seam finish pressing machine, front sleeve seams men's jackets

- Linear travelling frame: Eliminates obstruction in the loading area during positioning / free visibility to the pressing good / no heat radiation to the operator
- Vertical closing of head bucks: transfers even distribution of pressure onto the entire pressing surface and prevents displacement of the pressing good / Increases quality



- Pressing of jackets on hanger: jacket remains on hanger during the pressing operation / Increases productivity
- Digital programmer (DPS-Touch): Up-to-date and user-friendly touchscreen programmer automatically controls the machine via individual programs / Increases productivity

- Separate program selection switch: Allows quick change of programs when using DPS-touch programmer / Improves workstation layout.
- Digital distance control: Variable adjustment of the distance between the pressing shapes during the pressing process to avoid marks and shine on all types of fabric
- Steam edge suction: prevents damage to previously finished pressing areas during the pressing process / pleasant working environment
- Suction and fine suction in lower bucks: facilitates the positioning

Further advantages
1 2 4 5 6 7 8 9 10



BRISAY Standard Ironing Table



Operation:
Various Operations



BRI-150/101

Ironing table with surface

- Suction capacity adjustable: [Added flexibility for all kind of fabrics](#)
- Swivel arm and different buck shapes (at your choice)*: [Flexible system for different operations](#)
- Rapid exchange cover frame: [Rapid exchange cover frame](#)
- Dimension of surface: 900 x 650mm

Further advantages

1 5 8 9 10 11

Alternatives



BRI-166/101
Ironing table for sleeve head seams and shoulder finish (incl. iron BRI-1)

Operation:
 Finish of sleeve head seams and / or shoulder

Further advantages
 1 2 5 8 9 10 11



BRI-1005/101
Jacket front finish pressing machine (two-part machine)

Operation:
 Finish of left and right front panel incl. shaping effect

Further advantages
 1 2 3 4 5 6 7 8 9 10



BRI-709/101
Collar finish bust

Operation:
 Finish of collar and lapel including a soft crease in collar and lapel

Further advantages
 1 2 5 8 9 10



BRI-1105/101
Jacket back finish pressing machine (two-part machine)

Operation:
 Finish of left and right back panel incl. shaping effect

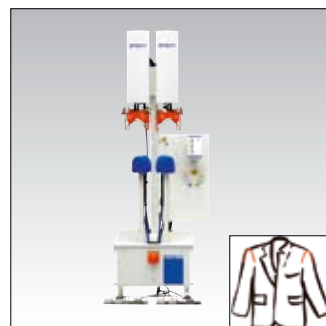
Further advantages
 1 2 3 4 5 6 7 8 9 10



BRI-880E/101
Sleeve finish pressing machine (time control)

Operation:
 Complete sleeve finish

Further advantages
 1 2 5 8 9 10



BRI-1650E/101
Sleeve head seam finish pressing machine (timer controlled)

Operation:
 Finish of sleeve head seams

Further advantages
 1 2 5 7 8 9 10



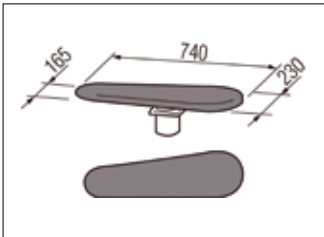
BRI-950E/101
Collar and lapel pressing machine (manual operation)

Operation:
 Finish of lapel and collar incl. shaping effect

Further advantages
 1 2 5 8 9 10

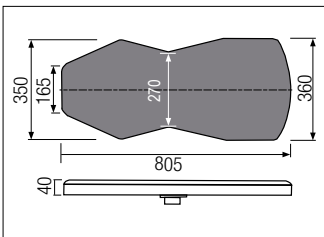


VEIT Finish Ironing Tables



Operation:

Finishing of sports jackets, blazers, jackets and costumes



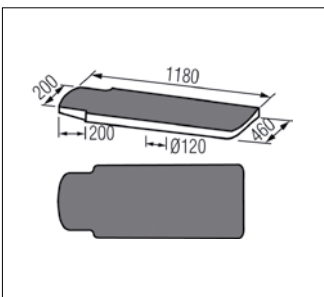
Also available as buck for ladies' wear



VEIT Varioset Finishing Station for men's and boys' wear and ladies' outerwear

The finishing station is particularly suitable for processing all sorts of jackets, blazers, suits etc. Various bucks (such as the all-purpose one shown) for suits etc. can be mounted on a specially designed spilltray for a crease-free storage of the garment. The ideal finishing station to meet your requirements can be assembled easily and quickly.

- Picture: base module S+B with suction and blowing, sound absorber, display, short support stand, double kickerplate, finish spilltray, universal buck long 740 x 230/165 mm / 29.13 x 9 x 6.5 inch with industry soft cover, iron rest.



Operation:

Finishing of sports jackets, blazers, and costumes



VEIT Varioset Lining Ironing Station Concave

The concave ironing surface maintains the pressed shape of the garment from the previous pressing operations. Moreover, this buck guarantees ideal positioning of the armhole area. For shoulder ironing, we recommend using the shoulder seam attachment and an appropriately shaped buck.

- Picture: base module S+B with suction and blowing, sound absorber, display, short support stand, double kickerplate, finish spilltray, lining ironing buck concave 1180 x 200/400 mm / 46.46 x 7.87/15.75 inch with soft cover, iron rest.

Please find more information about our wide range of VEIT ironing tables in the „Irons and Ironing Tables“ brochure.

VEIT Form and Multiform-Finishers



Operation:
diverse operations

Form Finisher VEIT 8308 – The cost conscious building block system

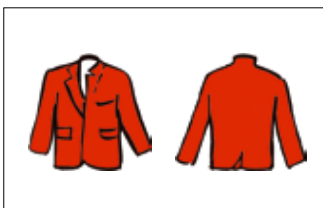
Our multi-purpose range of dress forms:

- According to application the height and shoulder width (270–450 mm / 10.6-17.7 inch) of the dress forms is infinitely adjustable.
- 360° rotatable: Forms can be exchanged within seconds, no adjustment is necessary.



Advantages

- Economical price/performance ratio
- High performance (up to 100 parts/h)
- Microprocessor control allows precise repetition of programme sequences.
- Extremely powerful blower with variable air quantity is adjustable for all fabrics, from extremely light-weight to very heavy ones.
- Special-purpose steaming dome including built-in drier ensures consistent steam quality.
- Two Form Finishers can be operated in tandem by a single operator in a very small area. The productive use of operator waiting times increases productivity by approx. 50 %.



Operation:
diverse operations

Multiform VEIT 8362 – The straight-forward solution to eliminate wrinkles!

- Hydraulic pneumatic vertical tensioning and adjustable re-stretching guarantees stable finishing
- Front and back clamps as well as lateral tensioners with fine adjustment can be activated if required. They can therefore be adjusted to suit every garment



- Detachable lapel clamp with height adjustment and pressure clamps
- Shoulder width is adjustable from 12.6 to 20.5 inch / 320 mm to 520 mm for size adjustments of garments.
- Variable fan speed
- Lateral, front and back clamps can be switched off to increase productivity



The control panel

- Up to 10 programmes can be stored
- Programmes are easily selected and adjusted with knobs.



Operation:
diverse operations

Multiform VEIT 8371 – A clear choice for great finishing results!

- The shoulder width is adjustable from 12.6 to 20.5 inch / 320 mm to 520 mm so as to set the size perfectly to fit the garment.
- Form rotates through 180° to make exact positioning of the garment easier.
- Unique form design allows the garments to be finished on hangers. The garments can remain on the hanger throughout the transportation, handling and finishing steps.

Hem tensioning and lateral seam plates

- Garments are not stretched during finishing to avoid damage to the fabric.
- The smooth running of the hem tensioning device ensures that the hems are tensioned very gently (important for stretch fabrics).
- Lateral shields and plates are available in radius 60, 90 and 120 mm / 2.36, 3.54 and 4.72 inch for easy adjustment to all kinds of garment sizes and cuts.
- Lateral seam plates have 3 settings for optimal adjustment to fitted garments.



The control panel

- Up to 5 programmes can be stored
- Extra air boost function of the fan for quicker drying and increasing productivity and cooling down of garments.
- Adjustable re-stretching function of chest to remove even persistent wrinkles.
- Lateral, front and back clamps can be switched off to increase productivity.
- Adjustable high performance heated fan

Options

- Programmable pneumatic sleeve tensioners: For quicker loading of machine as no additional handling of sleeve tensioners / Recommended for customers who want to finish high quantities in the same or similar size
- Extra steam: 2 built-in steam valves allow finishing of materials which need higher steam quantities (e.g. sportswear)
- Scale with stop: To limit tensioning of hem clamping (e.g. for knitwear)

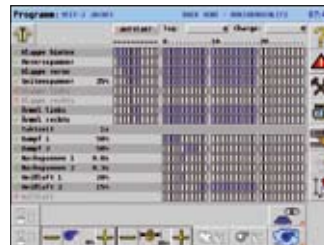
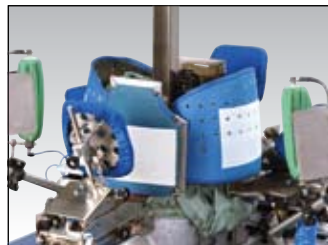


Operation:
diverse operations

Multiform VEIT 8381 – An array of options for a stunning effect!

Advantages

- Basic unit with a variety of different options available to finish all kinds of outerwear.
- Sensitive adjustment of tensioning movements (Stretch-Control) allows the treatment of high quality outerwear and even knitwear.
- Outstanding steam quality with high performance steam drying, 2 steam valves and adjustable steam quantity, therefore also suitable for the finest materials.
- Extremely high-performance fan with large heating coil and speed regulation for all kinds of materials from leather to fine knitted articles.
- Tangential hem adjustment and depth adjustment of the hem tensioning device guarantee hem tensioning without distortion even on tightly fitting garments.
- Air bag sleeve tensioners allows exact positioning and impression-free clamping.



Hem tensioning

- Hem tensioning can be pre-set to enable fast tensioning of large sizes. This increases the productivity.
- Hem tensioning devices can be adjusted tangentially. This is ideal for very fitted ladies' outerwear.
- Patented and electronically adjustable deactivation of hem tensioning allows the treatment of light-weight ladies' outerwear.
- Optional clamp for finishing of garments with side vents (e.g. sports jackets).

Touch screen control

- Over 100 programmes can be stored for quick and efficient working even when production runs are frequently change.
- Individually programmable control with the following functions:
 - Exact input of re-stretching force and time for an excellent finish results without overstretching.
 - Fine graduation of application times for steam, steam-air and air.
 - Sample programmes are stored for standard processing of jackets, ladies' suits, coats and sport coats. Machine can be ready for use immediately after installation.

Forms

- Different types of forms available for ladies' outerwear or men's and boys' wear (e.g. form with shoulder width and breast adjustment).

Technical Data 1

Type	Capacity per hour pieces	Connections					
		Steam 5 - 7.5 bar	Condensate max. 0.5 bar	Suction min. 120 mbar 11/2"	Compressed air 6 bar D=8 mm / 0.31 inch	Blowing D=12 mm / 0.47 inch	Voltage Volt / kW
1/3	–	1x1/4"	1x1/4"				
166	70	3/8"	3/8"	11/2"	D=8 mm / 0.31 inch	–	–
709	90	3/8"	3/8"	11/2"	D=8 mm / 0.31 inch	1	–
710E	85	3/8"	3/8"	11/2"	D=8 mm / 0.31 inch	1	230 V / 0.15 kW
810/101	85	2 x 1/2"	2 x 3/8"	2 x 11/2"	D=8 mm / 0.31 inch	2	230 V / 0.15 kW
810/111	55	2 x 1/2"	2 x 3/8"	2 x 11/2"	D=8 mm / 0.31 inch	2	230 V / 0.15 kW
810/201	65	2 x 1/2"	2 x 3/8"	2 x 11/2"	D=8 mm / 0.31 inch	2	230 V / 0.15 kW
810/211	50	2 x 1/2"	2 x 3/8"	2 x 11/2"	D=8 mm / 0.31 inch	2	230 V / 0.15 kW
860	75	3/8"	2 x 3/8"	2 x 11/2"	D=8 mm / 0.31 inch	1	230 V / 0.15 kW
880	80	3/8"	3/8"	11/2"	D=8 mm / 0.31 inch	–	230 V / 0.15 kW
880E	80	1/2"	3/8"	2"	D=12 mm / 0.47 inch	–	–
950	75	3/8"	2 x 3/8"	2 x 11/2"	D=8 mm / 0.31 inch	1	230 V / 0.15 kW
958E	75	3/8"	2 x 3/8"	2 x 11/2"	D=8 mm / 0.31 inch	2	230 V / 0.15 kW
1005	75	2 x 3/8"	2 x 3/8"	2 x 11/2"	2 x D=8 mm / 0.31 inch	2	230 V / 0.3 kW
1005E	45	1/2"	3/8"	2 x 11/2"	D=8 mm / 0.31 inch	1	230 V / 0.15 kW
1015E	45	1/2"	3/8"	2 x 11/2"	D=8 mm / 0.31 inch	2	230 V / 0.15 kW
1105	75	2 x 3/8"	2 x 3/8"	2 x 11/2"	2 x D=8 mm / 0.31 inch	2	230 V / 0.3 kW
1105E	45	1/2"	3/8"	2 x 11/2"	D=8 mm / 0.31 inch	1	230 V / 0.15 kW
1115E	45	1/2"	3/8"	2 x 11/2"	D=8 mm / 0.31 inch	2	230 V / 0.15 kW
1200	90	2 x 1/2"	2 x 3/8"	2 x 11/2"	2 x D=8 mm / 0.31 inch	2	230 V / 0.15 kW

1) with all options

Type	Dimensions		Consumption			
	L x W x H mm (inches)	Weight kg (lbs)	Steam kg/h	Suction l/min.	Compressed air l/min.	Blowing l/min.
1/3	195(7.8) x 60(2.4) (Sohle)	1130 (2491.2)	3			
166	1000(39.4) x 600(23.6) x 900(35.4)- 1150(45.3)	65 (143.3)	6	1200	1	–
709	600(23.6) x 400(15.8) x 1600(63)	60 (132.3)	3	300	1	104
710E	730(28.7) x 900(35.4) x 2450(96.5)	120 (264.6)	19.5	810	9	98
810/101	2800(110.2) x 1300(51.2) x 1800(70.9)	420 (925.9)	18	1100	29	1390 ¹⁾
810/111	2800(110.2) x 1300(51.2) x 2700(106.3)	580 (1278.7)	28	2800	30	970 ¹⁾
810/201	2800(110.2) x 1300(51.2) x 1800(70.9)	440 (970)	23	1300	22	1110 ¹⁾
810/211	2800(110.2) x 1300(51.2) x 2700(106.3)	600 (1322.8)	33	3000	29	900 ¹⁾
860	1500(59.1) x 1660(65.4) x 1900(74.8)	400 (881.9)	12	900	49	87
880	1150(45.3) x 1000(39.4) x 1150(45.3)	210 (463)	8	2000	12	–
880E	750(29.5) x 1250(49.2) x 1600(63)	500 (1102.3)	8	2000	30	–
950	2000(78.7) x 1760(69.3) x 1900(74.8)	480 (1058.2)	15.8	2000	50	87
958E	2000(78.7) x 1500(59.1) x 1900(74.8)	500 (1102.3)	15.8	2000	34	173
1005	2x 1150(45.3) x 2040(80.3) x 1750(68.9)	450 (992.1)	28.5	5000	85	173
1005E	2000(78.7) x 1950(76.8) x 2200(86.6)	820 (1807.8)	28.5	5000	71	173
1015E	2000(78.7) x 1950(76.8) x 2200(86.6)	610 (1344.8)	28.5	5000	50	173
1105	2x 1150(45.3) x 2040(80.3) x 1750(68.9)	450 (992.1)	28.5	5000	85	173
1105E	2000(78.7) x 1950(76.8) x 2200(86.6)	820 (1807.8)	28.5	5000	71	173
1115E	2000(78.7) x 1950(76.8) x 2200(86.6)	610 (1344.8)	28.5	5000	50	173
1200	3135(123.4) x 1500(59.1) x 2400(94.5)	780 (1719.6)	28.5	5000	76	173

Technical Data 2

Type	Connections						
	Capacity per hour pieces	Steam 5 -- 7.5 bar	Condensate max. 0.5 bar	Suction min. 120 mbar 1 1/2"	Compressed air 6 bar D=8 mm / 0.31 inch	Blowing D=12 mm / 0.47 inch	Voltage Volt / kW
1300	90	2 x 1 1/2"	2 x 3/8"	2 x 1 1/2"	2 x D=8 mm / 0.31 inch	2	230 V / 0.15 kW
1505	80	3/8"	2 x 3/8"	2 x 1 1/2"	D=8 mm / 0.31 inch	1	230 V / 0.15 kW
1920E	85	3/8"	3/8"	1 1/2"	D=8 mm / 0.31 inch	2	230 V / 0.15 kW
2000	–	1/2"	3/8"	2 x 1 1/2"	D=8 mm / 0.31 inch	2	230 V / 0.15 kW
2000E	–	1/2"	3/8"	2 x 1 1/2"	D=8 mm / 0.31 inch	1	230 V / 0.15 kW
2001E	–	1/2"	3/8"	2"	D=12 mm / 0.47 inch	–	–
2020	–	1/2"	3/8"	2 x 1 1/2"	D=8 mm / 0.31 inch	2	230 V / 0.15 kW
2065	–	3/8"	3/8"	1 1/2"	D=8 mm / 0.31 inch	1	230 V / 0.15 kW
2068	–	3/8"	3/8"	1 1/2"	D=8 mm / 0.31 inch	1	230 V / 0.15 kW
2068E	–	1/2"	3/8"	2"	D=12 mm / 0.47 inch	1 option	–
VEIT Varioset Finish Ironing Station	–	–	–	–	–	–	400 V / 0.55 kW / 50 Hz
VEIT Varioset Lining Ironing Station Concave	–	–	–	–	–	–	400 V / 0.55 kW / 50 Hz
Form Finisher VEIT 8308	60	1/2"	1/2"	–	6 mm / 0.24 inch / 1/4"	–	400 V / 2.2 kW / 50 Hz
Multiform VEIT 8362	60	1/2"	1/2"	–	6 mm / 0.24 inch / 1/4"	–	200-240 V / 0.75 kW / 50-60 Hz
Multiform VEIT 8371	40	1/2"	1/2"	–	6 mm / 0.24 inch / 1/4"	–	200-240 V / 50-60 Hz
Multiform VEIT 8381	40	3/4" *	1/2"	–	6 mm / 0.24 inch / 1/4"	–	200-240 V / 50-60 Hz

*with connection unit 1/2"

Type	Dimensions		Consumption			
	L x W x H mm (inches)	Weight kg (lbs)	Steam kg/h	Suction l/min.	Compressed air l/min.	Blowing l/min.
1300	3135(123.4) x 1500(59.1) x 2400(94.5)	780 (1719.6)	28.5	5000	75	173
1505	1150(45.3) x 1000(39.4) x 1150(45.3)	230 (507.1)	8	2000	25	92
1920E	830(32.7) x 850(33.5) x 2100(82.7)	200 (440.9)	15	2000	15	196
2000	1500(59.1) x 1650(65) x 1900(74.8)	420 (925.9)	18	2800	59	139
2000E	1500(59.1) x 1500(59.1) x 1900(74.8)	420 (925.9)	18	2800	55	139
2001E	1500(59.1) x 1400(55.1) x 1600(63)	530 (1168.5)	18	2800	45	139
2020	1300(51.2) x 1650(65) x 1900(74.8)	420 (925.9)	17	2700	59	139
2065	1150(45.3) x 1000(39.4) x 1150(45.3)	220 (485)	8	2000	35	277
2068	1150(45.3) x 1000(39.4) x 1150(45.3)	220 (485)	8	2000	35	277
2068E	750(29.5) x 1250(49.2) x 1600(63)	500 (1102.3)	18	3500	90	277
VEIT Varioset Finish Ironing Station	1500(59.1) x 1700(66.9) x —	—	—	—	—	—
VEIT Varioset Lining Ironing Station Concave	1450 x 1500x —	—	—	—	—	—
Form Finisher VEIT 8308	525(20.7) x 1270(50) x 790(31.1)	115 (253.5)	25	—	1 l/cycle	—
Multiform VEIT 8362	820(32.3) x 821(32.3) x max. 2300(90.6)	180 (452)	15	—	3 l/cycle	—
Multiform VEIT 8371	820(32.3) x 821(32.3) x max.1680(66.1)	180 (427.7)	40	—	3 l/cycle	—
Multiform VEIT 8381	900(35.4) x 1300(51.2) x max. 2200(86.6)	215 (474)	70	—	7 l/cycle	—

Pressing for Excellence – Why you can put your trust in the VEIT-Group

For over 50 years, the requirements and the problems of our customers world-wide have been our most important challenge. For decades, world-famous brands in the German and the international garments industry have had confidence in the innovative, high-quality products and services of the VEIT-Group.



Our experts consult with you as a partner to assist you in finding the best solution for your project no matter if you are planning to use individual machines or if you need a complete production line.



Prompt delivery and professional installation of your machines and systems goes hand in hand with premium training with which we enable your staff to achieve the highest possible productivity.

Worldwide 24 hr Service Hotline

Our service technicians worldwide are available around the clock so that your production works with as little disruption as possible.



We look forward to dealing with you personally!

Your local sales agent:

VEIT GmbH

Justus-von-Liebig-Str. 15
D-86899 Landsberg/Lech
Germany
Tel. +49 (8191) 479-204
Fax +49 (8191) 479-199
E-Mail: info@veit.de
www.veit-group.com

BRISAY-Maschinen GmbH

Mittelweg 4
D-63762 Grossostheim-Ringheim
Germany
Tel. +49 (6026) 997-0
Fax +49 (6026) 997-100
E-Mail: info@BRISAY.de
www.BRISAY.com

KANNEGIESSER Garment & Textile Technologies GmbH & Co.

Valdorfer Strasse 100
D-32602 Vlotho · Germany
Tel. +49 (5733) 87 13-0
Fax +49 (5733) 87 13-45
E-Mail: info@veit-kannegiesser.de
www.veit-kannegiesser.com

